



Francis Turbines by

The James Leffel & Co.



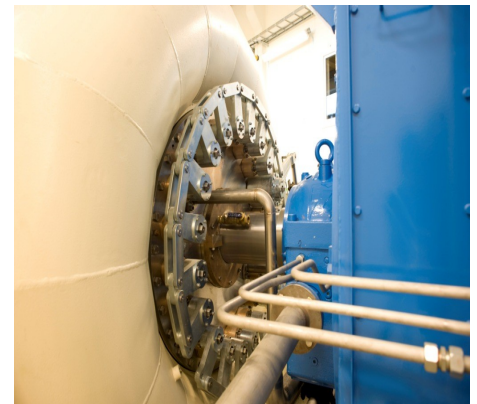
**Unit 1: 0.66 M Francis  
2.0 MW / 82.2 M Head / 750 RPM**

**Unit 2: 0.47 M Francis  
1.0 MW / 82.2 M Head / 1000 RPM**

**Designed, manufactured,  
and installed by  
The James Leffel & Co.**

**Commissioned: May 2009**

**Location: Ålen, Norway**



1978 Commerce Circle—Springfield, OH 45504

Phone: 937-322-0116 Fax: 937-322-0467

Email: [turbines@leffelcompany.com](mailto:turbines@leffelcompany.com)

**Representation in Norway:**  
James Leffel Norway  
Telefon: 011 47 90 85 35 93

The James Leffel & Co.

Serving the Hydropower Industry Since 1862

